

# Lactose Intolerance

## Breath Test

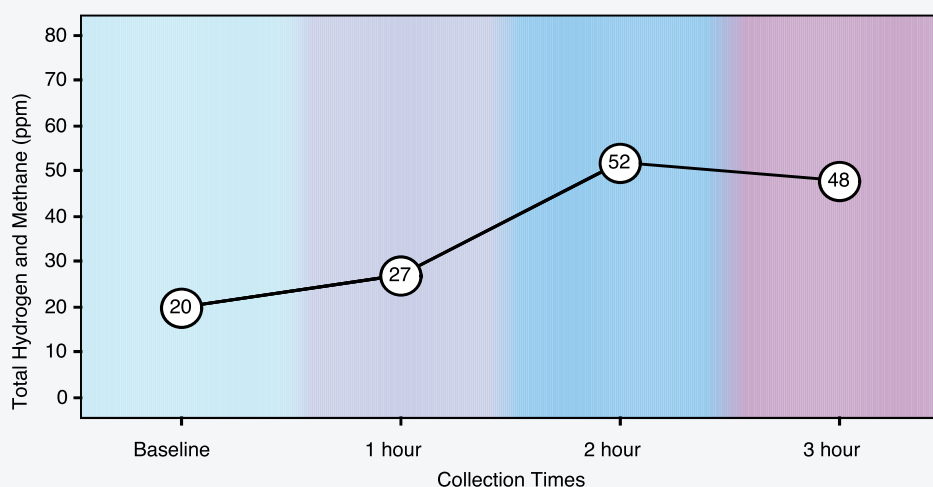


63 Zillicoa Street  
Asheville, NC 28801  
© Genova Diagnostics

Patient: SAMPLE      Order Number:  
PATIENT              Completed:  
Age: 36                Received:  
Sex: M                 Collected:  
MRN:

### SAMPLE REPORT

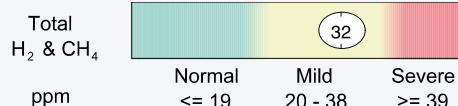
#### Total Hydrogen & Methane Breath Gases



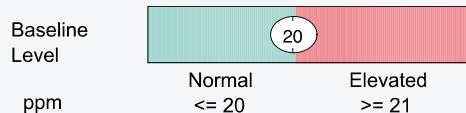
#### Hydrogen & Methane (ppm)

Hours	Base-line	1	2	3
Hydrogen (H <sub>2</sub> )	10	12	15	17
Methane (CH <sub>4</sub> )	10	15	37	31
Total	20	27	52	48

#### Change from Baseline



#### Baseline Evaluation



This test was developed and its performance characteristics determined by GSDL, Inc. It has not been cleared or approved by the U.S. Food and Drug Administration

© Genova Diagnostics · CLIA Lic. #34D0655571 · Medicare Lic. #34-8475

This test reveals important clinical information about:

- **“This Test” subheader bold - page 2**
- Excess bacterial fermentation and malabsorption due to lactose intolerance, a common condition underlying chronic symptoms of gas, bloating, irregularity, and abdominal pain
- Both hydrogen and methane levels, plotted over time in response to lactose challenge, for a sensitive, specific, and non-invasive assessment of lactose intolerance
- Chronic hypersensitivity to lactose which, without proper detection and treatment, can eventually weaken the digestive system and lead to critical nutrient deficiency, parasite infection, as well as yeast and bacterial overgrowth.

For test kits, clinical support, or more information contact:

Client Services  
Genova Diagnostics  
63 Zillicoa St.  
Asheville, NC 28801-1074  
800-522-4762 • Fax: 828-252-9303 • [www.GDX.net/cs](http://www.GDX.net/cs)

More detailed publications with references are also available: [www.GDX.net](http://www.GDX.net)